

PLAN MATERIAL	MYLAR
PLASTIC MATERIAL	0-076 mm
GAUGE	SPECIAL
INK	

X-3132

PLAN 20R-7630

RECEIVED AND DEPOSITED

DATE: 25 Aug 1986

**SURVEYOR'S CERTIFICATE:**

I HEREBY CERTIFY THAT THE STRUCTURES SHOWN ON THIS PLAN ARE IN EXISTENCE AND HAVE BEEN VERIFIED BY ACTUAL MEASUREMENT.

DATE: AUGUST 7, 1986

*Robert T. Force*  
ROBERT T. FORCE, O.L.S.

APPROVED August 21, 1986

*Robert T. Force*  
ASST. EXAMINER OF SURVEYS

I REQUIRE THIS PLAN TO BE DEPOSITED UNDER THE LAND TITLES ACT.

DATE: AUGUST 7, 1986

*Robert T. Force*  
ROBERT T. FORCE, O.L.S.

PARTS 1 TO 76, BOTH INCLUSIVE AND 78 TO 83, BOTH INCLUSIVE, ALL OF PARCEL RESERVE BLOCK D-4, SECTION H-1; PART 77, ALL OF PARCEL RESERVE BLOCK D-2, SECTION H-1; PARTS 80 AND 81 AND THOSE PORTIONS OF PARTS 4, 5, 46, 51, 56 AND 63 LYING WITHIN PARTS 70, 73, 75, 76, 17 AND 23 RESPECTIVELY OF PLAN 20R-6669; SUBJECT TO EASEMENT FOR THE PURPOSES IN INSTRUMENT 238446; PART 77 SUBJECT TO RIGHT OF WAY BY TRANSFER 238446

**SURVEYOR'S CERTIFICATE:**

I CERTIFY THAT (1) THIS SURVEY AND PLAN ARE CORRECT AND IN ACCORDANCE WITH THE SURVEYS ACT AND THE LAND TITLES ACT AND THE REGULATIONS MADE THEREUNDER (2) THE SURVEY WAS COMPLETED ON THE 6th DAY OF AUGUST, 1986

DATE: AUGUST 7, 1986

*Robert T. Force*  
ROBERT T. FORCE, O.L.S.

**CAUTION:**  
THIS PLAN IS NOT A PLAN OF SUBDIVISION WITHIN THE MEANING OF THE PLANNING ACT.

**METRIC:**  
DISTANCES SHOWN ON THIS PLAN ARE IN METRES AND CAN BE CONVERTED TO FEET BY DIVIDING BY 0.3048

**BEARING REFERENCE:**  
BEARINGS SHOWN HEREON ARE ASTROMONIC AND ARE REFERRED TO THE SOUTHEASTERLY LIMIT OF WALKER STREET ASSUMED TO BE N 39° 05' 00" E AS PER PLAN 20R-6669

**LEGEND:**  
□ DENOTES PLANTED  
● DENOTES FOUND  
SIB DENOTES STANDARD IRON BAR (0.025 x 0.025 x 1.22)  
IB DENOTES ROUND IRON BAR (0.018 DIA x 0.61)  
IB DENOTES IRON BAR (0.015 x 0.015 x 0.61)  
760 DENOTES MCCONNELL, MAUGHAN LIMITED, O.L.S.  
WIT DENOTES WITNESS

**NOTE:**  
PARTS 1, 2, 3, 4, 5, 6, 7, 8, 9, 10, 11, 12, 13, 14, 33, 34, 38, 39, 40, 41, 45, 46, 50, 51, 55, 56, 60, 61, 62, 63, 67, 68, 72, 73, 77, 78, 80, 81, 82 AND 83 ARE NOT LIMITED VERTICALLY.

**BENCHMARK:**  
ELEVATIONS ARE GEODETIC AND ARE REFERRED TO TOWN OF OAKVILLE GEODETIC BENCHMARK # 21 HAVING AN ELEVATION OF 85.733 (TABLET ON NORTHWESTERLY CONCRETE FOUNDATION WALL OF BREWERS RETAIL STORE AT KERR STREET AND LAKESHORE ROAD)

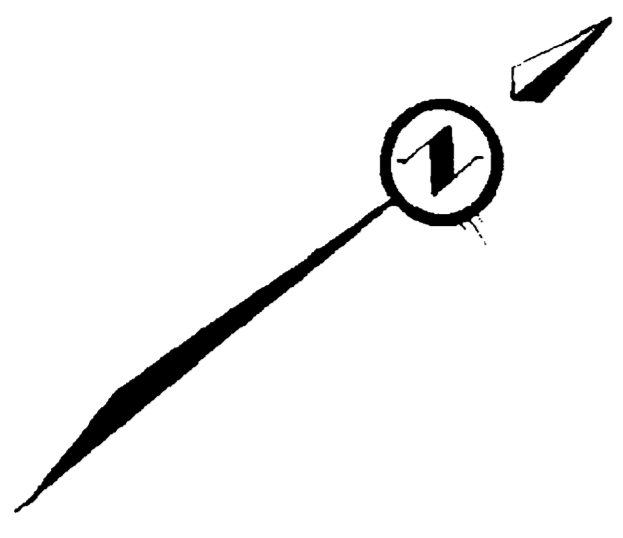
**MONUMENTATION:**  
MONUMENTATION OF PARTS 75, 70, 65, 58, 53, 48, 43, 36, 31, 28, 25, 22, 19 AND 16 WITH STANDARD IRON BARS WAS NOT POSSIBLE AS CORNERS WERE COINCIDENT WITH FACES OF STEEL COLUMNS WHICH THEMSELVES BECAME WITNESSES TO PART BOUNDARIES.

**mc connell, maughan limited** CONSULTING ENGINEERS AND SURVEYORS  
OAKVILLE - TORONTO  
407 SPEERS ROAD, SUITE 209, OAKVILLE, L6K-3T5 TEL: (416) 845-3597  
DRAWN BY M.S.T. CHECKED BY R.T.F. SCALE 1:200 PLAN NO. 12-82-6R

PLAN OF SURVEY OF  
**PARTS OF RESERVE BLOCKS D & E  
REGISTERED PLAN No. 1  
TOWN OF OAKVILLE  
REGIONAL MUNICIPALITY OF HALTON.**

MCCONNELL, MAUGHAN LIMITED, O.L.S., 1986

SCALE = 1:200

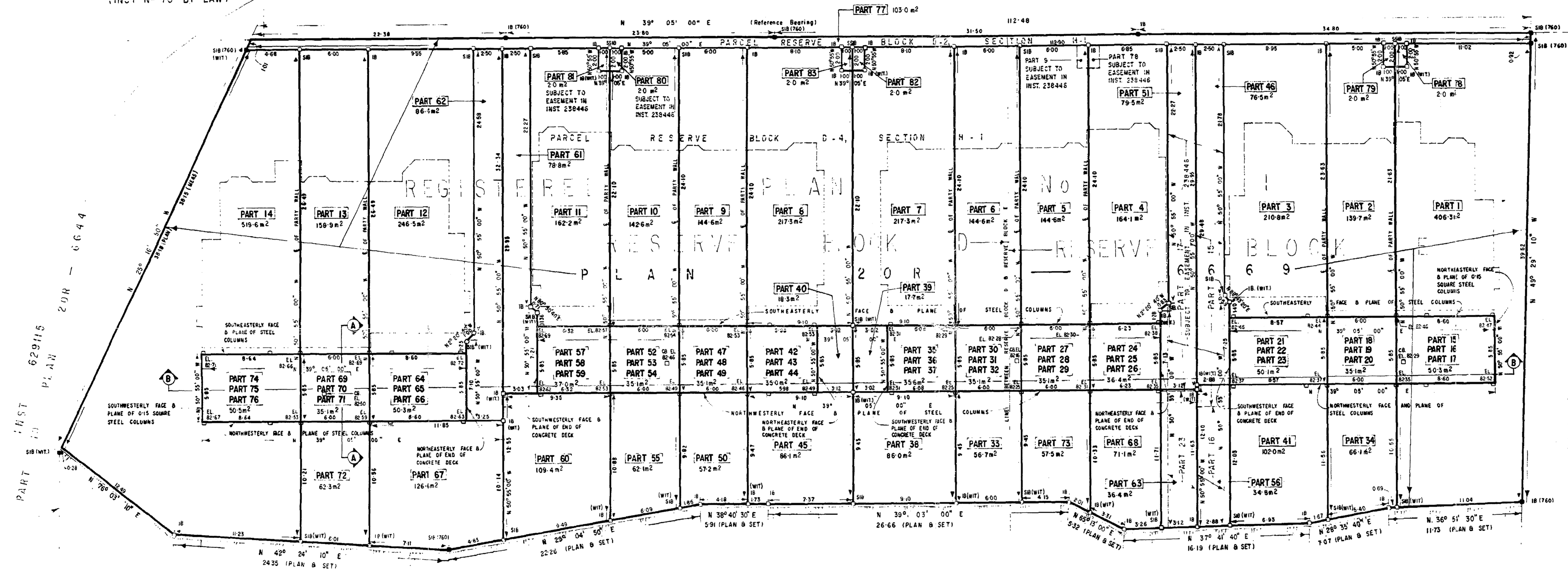


WALKER STREET  
(CLOSED BY BY-LAW 381)  
(INST. N° 76-BY-LAW)

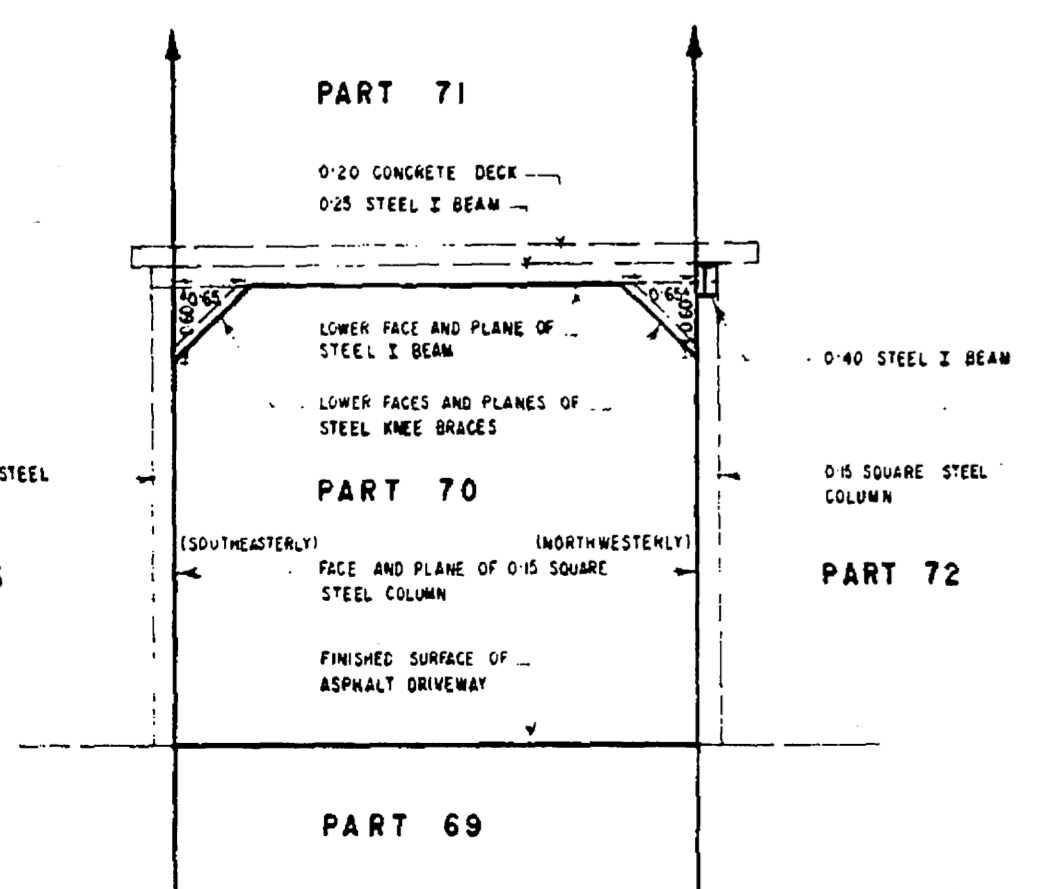
WILSON STREET

WALKER STREET

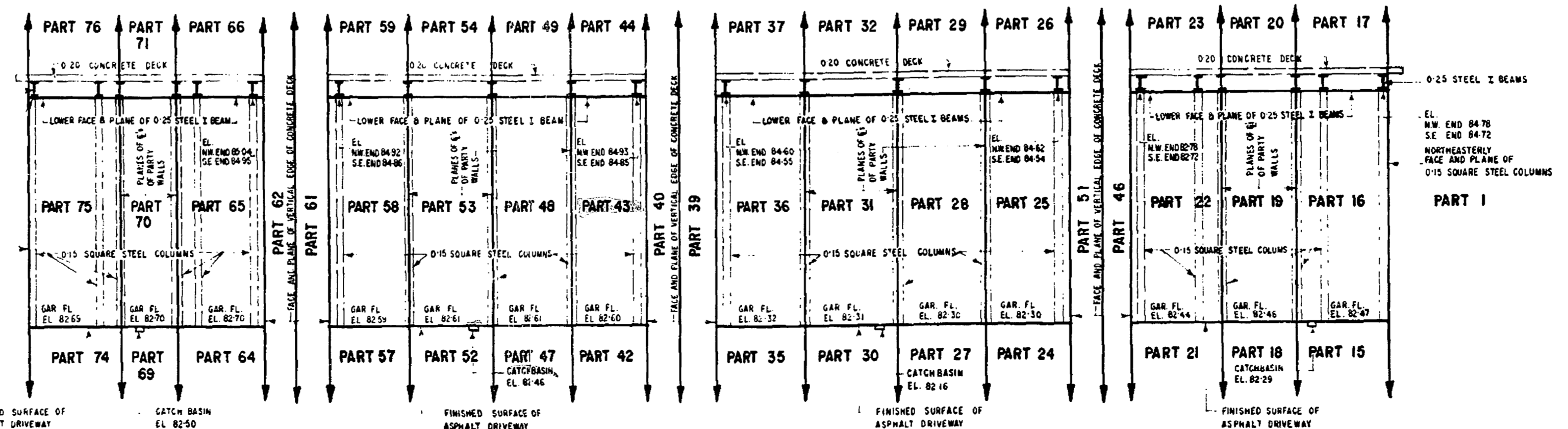
WALKER STREET



PART 2 PLAN 20R-6642  
PARCEL RESERVE BLOCK D-3, SECTION H-1



SECTION A-A NOT TO SCALE  
TYPICAL TO PARTS 15, 16, 17, 18, 19, 20; 21, 22, 23; 24, 25, 26; 27, 28, 29, 30, 31, 32; 35, 36, 37, 42, 43, 44; 47, 48, 49; 52, 53, 54; 57, 58, 59; 64, 65, 66; AND 74, 75, 76



SECTION B-B NOT TO SCALE